

# Blood Circulation / Peredaran Darah

---

Understand the function of /memahami fungsi

- a) Artery /Arteri
- b) Vein/vena
- c) Blood Capillary/Kapilari

## Question 1

Complete the Table Below

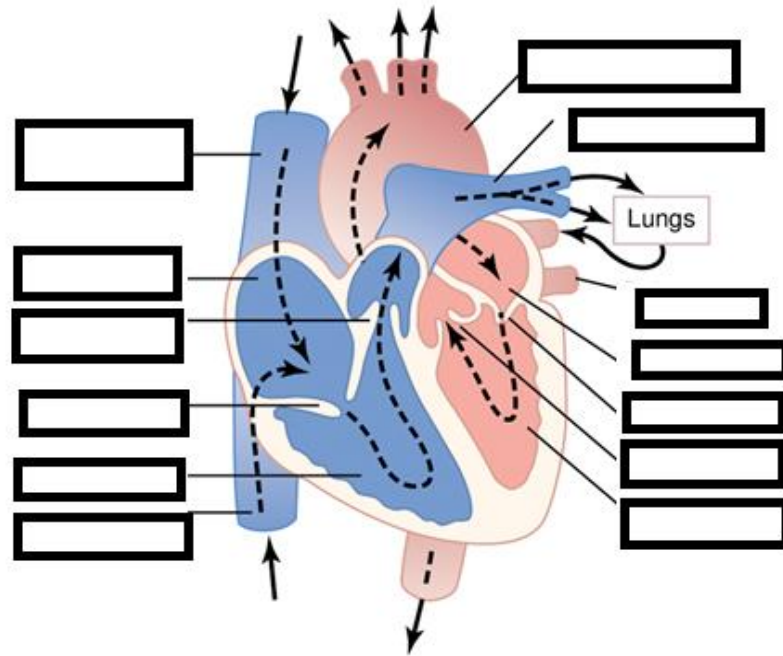
Artery / Arteri	Vein / Vena	Blood Capillary / Kapilari darah



# The Heart

---

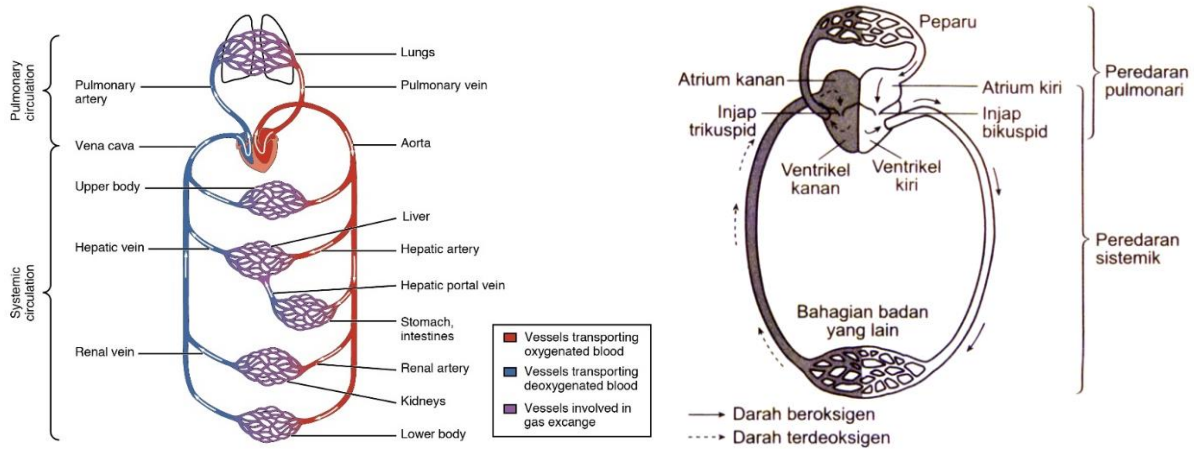
## Question 2



## Question 3

Determine the characteristics of the Heart . Explain the 4 chambers of the heart

# Flow of Blood



## Question 4

Explain the flow of blood from the heart to the rest of the body

## Question 5

Determine the factors that affect the heart beat **Berikan faktor Yangg menyebabkan denyutan jantung**

Factors	Reason
Sex (Male or Female) / <b>Jantina</b>	
Age / <b>Umur</b>	
Health of Body / <b>Kesihatan</b>	
Sports and activities / <b>Sukan dan aktiviti harian</b>	

## Question 6

What is the difference between Pulmonary Circulation and Systemic Circulation. **Apakah perbezaan antara Peredaran Pulmonari dan Peredaran sistemik (Lengkapkan)**

Pulmonary Circulation	VS	Systemic Circulation



## Question 7

Complete the table below? Lengkapi jadual di bawah

Basis of Comparison	Systolic	Diastolic
Definition <b>Definisi</b>		
Blood Pressure		
Normal Range		
Changes With Age		
Blood Vessel		
Behavior of Ventricles		
Blood pressure Reading		
Significance		



# Human Blood / Jenis Darah

---

## RED BLOOD CELL/ SEL DARAH MERAH

### Question 8

What are the 3 main types of blood ?

---

### Question 9

What is the function of Red Blood Cell/ Apakah kegunaan Sel darah Merah ?

---

### Question 10

Why is Red Blood Cell Red in Colour/ Mengapakah Sel darah Merah berwarna Merah?

---

### Question 11

What is the shape of Red Blood Cell/ Apakah bentuk Sel Darah Merah

---

*All the answer can be obtained from the Notes. Purchase the notes and search for the Red Blood Cell Sections*



Edunovice Learning  
[www.onlinetuitionclass.com](http://www.onlinetuitionclass.com)



<https://www.facebook.com/Solvemyhomework/>



Forecast Tips  
[www.tipsexam.com](http://www.tipsexam.com) / [www.skorminda.com](http://www.skorminda.com)



[yawkeanhuat@gmail.com](mailto:yawkeanhuat@gmail.com)

## WHITE BLOOD CELL & PLATLET/ **SEL DARAH PUTIH & PLATLET**

### Question 12

What is the function of White Blood Cell/ **Apakah bentuk Sel Darah Putih**

---

### Question 13

What is the colour White Blood Cell/ **Apakah warna sel darah putih**

---

### Question 14

What is the function of platelets/ **Apakah fungsi platelet**

---

*All the answer can be obtained from the Notes. Purchase the notes and search for the White Blood Cell and Platelet Sections*

## BLOOD PLASMA/ **PLASMA DARAH**

### Question 15

What is the colour of Blood Plasma / **Apakah warna Plasma Darah**

---

### Question 17

What are the substances consists in Blood Plasma/ **Apakah kandungan dalam Plasma Darah**

---



Edunovice Learning  
[www.onlinetuitionclass.com](http://www.onlinetuitionclass.com)



<https://www.facebook.com/Solvemyhomework/>



Forecast Tips  
[www.tipsexam.com](http://www.tipsexam.com) / [www.skorminda.com](http://www.skorminda.com)



[yawkeanhuat@gmail.com](mailto:yawkeanhuat@gmail.com)

## Blood Groups/ **Kumpulan Darah**

### Question 18

What are the groups in Red Blood Cell

### Question 19

Describe Blood transfusion. How is the process ? Apakah maksud Transfusi Darah. **Bagaimanakah proses in berlaku**

### Question 20

How do you stockpile blood in blood bank? **Bagaimanakah darh disimpan di bank darah ?**





## Question 21

What is the shelf life of Red Blood Cell?

---



**Edunovice Learning**  
[www.onlinetuitionclass.com](http://www.onlinetuitionclass.com)



<https://www.facebook.com/Solvemyhomework/>



**Forecast Tips**  
[www.tipsexam.com](http://www.tipsexam.com) / [www.skorminda.com](http://www.skorminda.com)



[yawkeanhuat@gmail.com](mailto:yawkeanhuat@gmail.com)

# Transport System of Plants

---

## Question 22

What is wilting? Apakah maksud layu?

---

## Question 23

How does water escape from plants via transpiration? Bagaimanakah air hilang dari tumbuhan melalui proses transpirasi?

---

## Question 24

What is the role of Xylem and Phloem ?

Parts	Functions
Xylem /Xilem	
Phloem /Floem	

## Question 25

How is oxygen, nutrients and other useful substances from external environment move into the plant cells? Bagaimanakah oksigen, nutrien dan bahan berguna dari persekitaran luar masuk ke dalam sel

---



## Question 26

What is transpiration ? **Berikan Definasi transpirasi**

---

---

## Question 27

Why do plants need water ? **Mengapakah tumbuhan memerlukan air ?**

## Question 28

Factors affecting Transpiration ? **Faktor yang menyebabkan Transpirasi ?**



Edunovice Learning  
[www.onlinetuitionclass.com](http://www.onlinetuitionclass.com)



<https://www.facebook.com/SolveMyhomework/>



Forecast Tips  
[www.tipsexam.com](http://www.tipsexam.com) / [www.skorminda.com](http://www.skorminda.com)



[yawkeanhuat@gmail.com](mailto:yawkeanhuat@gmail.com)

# Stomata

---

## Question 29

Draw the diagram of stoma cell ? **Lukis gambar rajah sel stoma ?**



## Question 30

What is the factor that influence the size of stomata ? **Apakah factor yang mempengaruhi saiz stomata**

